

# Newsletter

## Christmas Fair Edition



We are super excited for our annual Christmas Fair on **Thursday 11th December 2025 at 3.30 - 5pm!** You can try your luck on our tombola, have a warm drink and festive snacks, take part in the fun and games, you might be lucky enough to win something from our raffle! We are keeping our fingers crossed that Father Christmas will be able to join us too!



On **Friday 5th December** children are invited to school wearing their own clothes (Christmas theme). We are asking for the below contributions in exchange for the below;

- \* Nursery, Reception, Year 1 & Year 2 - bring chocolate
- \* Year 3, Year 4, Year 5 & Year 6 - bring a bottle



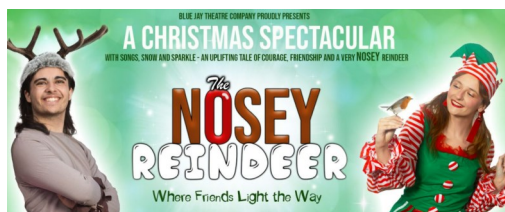
A huge thank you for some **AMAZING** donations for prizes to our tombola!

- \* Made For Stage - a fully paid place for a child from January - July (worth £252!) to take part in their annual show at Blackburn Empire Theatre
- \* BwD Venues - family ticket to The Nosey Reindeer Christmas Show on Friday 19th December at 4pm



### On the day...

Please bring plenty of change, a carrier bag for purchases and prizes and lots of festive cheer!



### Big Christmas Giveaway! Who wants to win £150!?

We're excited to announce a special **£150 prize draw** taking place at our **Christmas Fair on Thursday 11th December!**

To be entered, all parents need to do is **apply for Free School Meals** using the QR code provided or by clicking the link below.

**It doesn't matter if you're accepted or not — as long as you've applied, you'll be entered into the raffle!**

The application is **quick, simple**, and takes **no more than 5 minutes**.

Imagine winning **£150 just before Christmas...** perfect timing!

Good luck, everyone!





**MOMENTS  
MATTER,  
ATTENDANCE  
COUNTS.**



**Friday 21st November**

[www.stannesblackburn.co.uk](http://www.stannesblackburn.co.uk)  
[www.facebook.com/stannesrcprimary](https://www.facebook.com/stannesrcprimary)  
 Telephone: 01254 580462



# Dates for your diary



| <b>Dec-25</b>         |   |
|-----------------------|---|
| <b>Monday 1st</b>     | 11am Advent Mass<br>3.15pm - 4.30pm Christmas craft club - session 3  |
| <b>Thursday 4th</b>   | 2.45pm Year 3 Made for Stage Performance (parents/carers invited)<br>3pm Year 5 Made for Stage Performance (parents/carers invited)   |
| <b>Friday 5th</b>     | Christmas own clothes day (bring chocolate or a bottle)<br>2.45pm Year 4 Made for Stage Performance (parents/carers invited)<br>2.45pm Year 6 Made for Stage Performance (parents/carers invited) |
| <b>Monday 8th</b>     | 3.15pm - 4.30pm Christmas craft club - session 4  |
| <b>Tuesday 9th</b>    | Choir to sing at Spinneyside  |
| <b>Wednesday 10th</b> | Dick Whittington Christmas Ice show (£6 per child)<br>9am - 11am Nursery and Reception Christmas Party (party clothes)  |
| <b>Thursday 11th</b>  | Christmas Jumper Day<br>Christmas Dinner Day<br>3.30pm - 5pm Christmas Fair (parents/carers invited)<br><b>*****AFTERSCHOOL CLUB CANCELLED DUE TO FAIR*****</b>                                   |
| <b>Monday 15th</b>    | Nursery & Reception Nativity Dress Rehearsal  |
| <b>Tuesday 16th</b>   | 9.30am Nursery & Reception Nativity (parents/carers invited)  |
| <b>Wednesday 17th</b> | Choir to sing at Blackburn College<br>Y1 & Y2 Nativity Dress Rehearsal<br>2pm Y3, Y4, Y5 & Y6 Carol Service (parents/carers invited)  |
| <b>Thursday 18th</b>  | 2.15pm Y1 & Y2 Nativity (parents/carers invited)  |
| <b>Friday 19th</b>    | <b>School closes for Christmas at 1.30pm</b>  |



Y1 - Y6 children will be visiting the ice arena for our Christmas show this year. We are asking for a £6 per child contribution that can be paid on the My Child At School app



Please sign up to “My child at school” to receive all school information and to keep up with dinner and club charges & payments.

Please do not make any further payments on School Money—you may still receive emails/texts from this service but you can now delete the app.

## Award winners

| Year Group | Headteacher's Award | Witness Award |
|------------|---------------------|---------------|
| Reception  | Tiago               | Ariella       |
| Year 1     | Brunon              | Amelia        |
| Year 2     | Gabriel             | Zayn          |
| Year 3     | Emmanuel            | Lukne         |
| Year 4     | Hassan              | Saleh         |
| Year 5     | Qasim               | Jake          |
| Year 6     | Lexi                | Zill          |

Blackburn with Darwen  
**ADULT LEARNING**

## Festive Crafts Open Day

BWD Adult Learning is offering FREE festive crafts sessions for parents and children

**Activities include**  
 Sock Penguins  
 Festive Cracker Making  
 Badge making  
 Cake Decorating

Saturday 6th December  
 10:00 - 11:30am or 12:00 - 1:30pm  
**Bank Top NLC, BB2 1QP**

BOOK NOW

For more information contact us on  
[adultlearning@blackburn.gov.uk](mailto:adultlearning@blackburn.gov.uk)

| Year Group | Attendance %       |
|------------|--------------------|
| Above 98%  | VERY GOOD          |
| Above 96%  | GOOD               |
| Below 96%  | ALMOST THERE       |
| Below 90%  | IMPROVEMENT NEEDED |
| Below 85%  | CONCERNED          |
| Below 85%  | VERY CONCERNED     |

| Year Group | Attendance % |
|------------|--------------|
| Reception  | 97.5%        |
| Year 1     | 94.2%        |
| Year 2     | 96.9%        |
| Year 3     | 96.1%        |
| Year 4     | 95.8%        |
| Year 5     | 97.3%        |
| Year 6     | 94.3%        |

## Attendance Award

**1<sup>st</sup>**

**Reception**

**2<sup>nd</sup>**

**Year 5**

**3<sup>rd</sup>**

**Year 2**