

# Newsletter

## Christmas Fair Edition



We are super excited for our annual Christmas Fair on **Thursday 11th December 2025 at 3.30 - 5pm!** You can try your luck on our tombola, have a warm drink and festive snacks, take part in the fun and games, you might be lucky enough to win something from our raffle! We are keeping our fingers crossed that Father Christmas will be able to join us too!



On **Friday 5th December** children are invited to school wearing their own clothes (Christmas theme). We are asking for the below contributions in exchange for the below;

- \* Nursery, Reception, Year 1 & Year 2 - bring chocolate
- \* Year 3, Year 4, Year 5 & Year 6 - bring a bottle



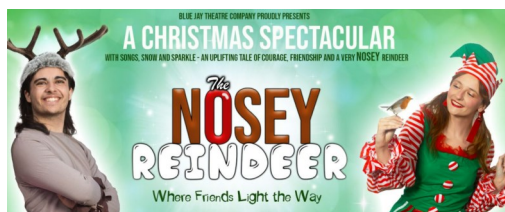
A huge thank you for some **AMAZING** donations for prizes to our tombola!

- \* Made For Stage - a fully paid place for a child from January - July (worth £252!) to take part in their annual show at Blackburn Empire Theatre
- \* BwD Venues - family ticket to The Nosey Reindeer Christmas Show on Friday 19th December at 4pm



### On the day...

Please bring plenty of change, a carrier bag for purchases and prizes and lots of festive cheer!



### Big Christmas Giveaway! Who wants to win £150!?

We're excited to announce a special **£150 prize draw** taking place at our **Christmas Fair on Thursday 11th December!**

To be entered, all parents need to do is **apply for Free School Meals** using the QR code provided or by clicking the link below.

**It doesn't matter if you're accepted or not — as long as you've applied, you'll be entered into the raffle!**

The application is **quick, simple**, and takes **no more than 5 minutes**.

Imagine winning **£150 just before Christmas...** perfect timing!

Good luck, everyone!





**MOMENTS  
MATTER,  
ATTENDANCE  
COUNTS.**



**Friday 21st November**

[www.stannesblackburn.co.uk](http://www.stannesblackburn.co.uk)  
[www.facebook.com/stannesrcprimary](https://www.facebook.com/stannesrcprimary)  
 Telephone: 01254 580462



DIocese of SALFORD



**St. Annes RC Primary School**

# OPEN DAY

Wednesday 26th November 2025

1.30pm - 2.30pm

Take a look around our fantastic school!

Reception 2026  
starters



# Dates for your diary



<b>Nov-25</b>	
<b>Monday 17th</b>	3.15pm - 4.30pm Christmas craft club - session 2
<b>Tuesday 25th</b>	Y1 trip to Waterstones
<b>Wednesday 26th</b>	9.30am - 10.30am Nursery & Reception Stay & Play
	1.30 - 2.30pm Whole school open day
<b>Dec-25</b>	
<b>Monday 1st</b>	11am Advent Mass
	3.15pm - 4.30pm Christmas craft club - session 3
<b>Friday 5th</b>	Christmas own clothes day (bring chocolate or a bottle)
<b>Monday 8th</b>	3.15pm - 4.30pm Christmas craft club - session 4
<b>Tuesday 9th</b>	Choir to sing at Spinneyside
<b>Wednesday 10th</b>	Dick Whittington Christmas Ice show (£6 per child)
<b>Thursday 11th</b>	Christmas Jumper Day
	Christmas Dinner Day
	3.30pm - 5pm Christmas Fair (parents/carers invited)
<b>Monday 15th</b>	Nursery & Reception Nativity Dress Rehearsal
<b>Tuesday 16th</b>	9.30am Nursery & Reception Nativity (parents/carers invited)
<b>Wednesday 17th</b>	Choir to sing at Kingsway
	Y1 & Y2 Nativity Dress Rehearsal
	2pm Y3, Y4, Y5 & Y6 Carol Service (parents/carers invited)
<b>Thursday 18th</b>	2.15pm Y1 & Y2 Nativity (parents/carers invited)
<b>Friday 19th</b>	<b>School closes for Christmas at 1.30pm</b>



Y1 - Y6 children will be visiting the ice arena for our Christmas show this year. We are asking for a £6 per child contribution that can be paid on the My Child At School app



Please sign up to “My child at school” to receive all school information and to keep up with dinner and club charges & payments.

Please do not make any further payments on School Money—you may still receive emails/texts from this service but you can now delete the app.

## Award winners

Year Group	Headteacher's Award	Witness Award
Reception	Mirna	Amira
Year 1	Rico	Ali
Year 2	Garen	Abdallah
Year 3	Siram	Alex
Year 4	Zoha	Amelia
Year 5	Linda	Lilla
Year 6	Aisha	Marsels

Year Group	Attendance %
Above 98%	VERY GOOD
Above 96%	GOOD
Below 96%	ALMOST THERE
Below 90%	IMPROVEMENT NEEDED
Below 85%	CONCERNED
Below 85%	VERY CONCERNED

Year Group	Attendance %
Reception	97.5%
Year 1	86.6%
Year 2	92.3%
Year 3	96.1%
Year 4	97.9%
Year 5	81.0%
Year 6	91.0%

Attendance Award	
	Year 4
	Reception
	Year 3